

Class Insecta (Hexapoda)

A PowerPoint Presentation by Mr. Dawson



INTRODUCTION

CHARACTERISTICS

ANATOMY

ORDERS

INTRODUCTION

CLASSIFICATION OF INSECTS

Kingdom (Animal)

Phylum (Arthropoda)

Class (Insecta)

Order (Hymenoptera)

Family (Apidae)

Genus (*Apis*)

Species (*mellifera*)



Apis mellifera is the genus and species of the HONEYBEE

MAIN

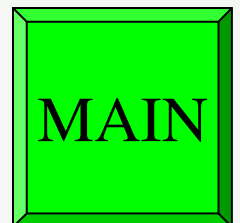
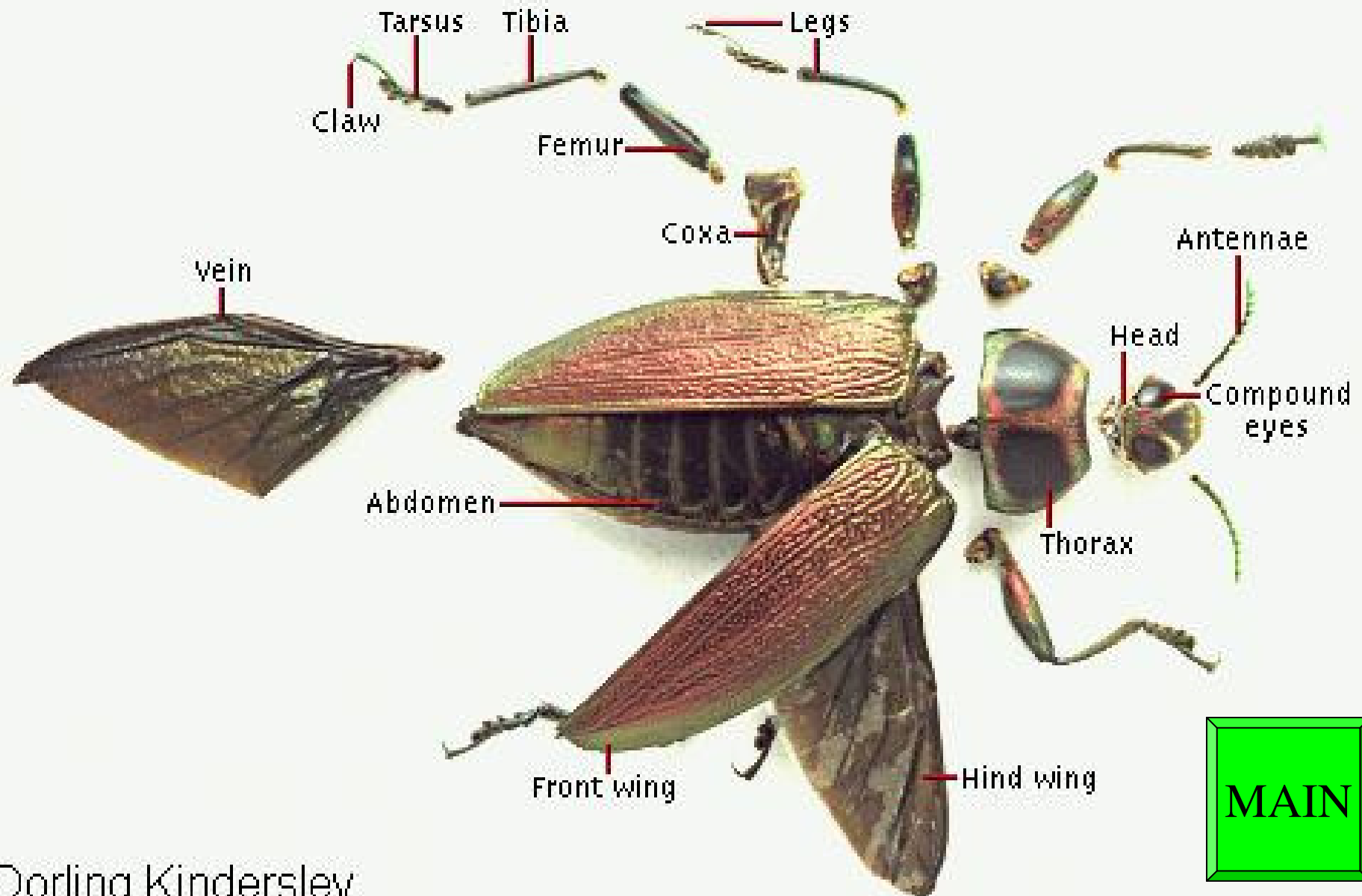
CHARACTERISTICS

Most adult insects have the following characteristics

1. The body is divided into three parts (Head, Thorax, and Abdomen).
2. Three pairs of legs.
3. One pair of antennae and one pair of compound eyes.
4. Usually two pairs of wings (absent in lice fleas and ants, one pair in flies).

MAIN

EXTERNAL ANATOMY



COMMON ORDERS OF INSECTS

Blattaria – roaches [VIEW](#)

Coleoptera – beetles and weevils [VIEW](#)

Collembola – springtails [VIEW](#)

Dermaptera – earwigs [VIEW](#)

Diptera – flies [VIEW](#)

Hemiptera – true bugs [VIEW](#)

Homoptera – cicadas, aphid, and leafhoppers [VIEW](#)

Hymenoptera– bees and wasps [VIEW](#)

[ORDERS I-T](#)

[AQUATIC
ORDERS](#)

[MAIN](#)

INSECT ORDERS CONTINUED

Isoptera – termites [VIEW](#)

Lepidoptera – butterflies and moths [VIEW](#)

Mantodea – mantids [VIEW](#)

Mecoptera – scorpionfly [VIEW](#)

Neuroptera – lacewing [VIEW](#)

Orthoptera – grasshoppers [VIEW](#)

Phasmida – walkingstick [VIEW](#)

Siphonaptera – fleas [VIEW](#)

Thysanura - silverfish [VIEW](#)

**ORDERS
A-H**

**AQUATIC
ORDERS**

MAIN

AQUATIC ORDERS

Plecoptera – stoneflies [VIEW](#)

Ephemeroptera – mayflies [VIEW](#)

Trichoptera - caddisfly [VIEW](#)

Odonata – dragonflies and damselflies [VIEW](#)

[ORDERS A-H](#)

[ORDERS I-T](#)

[MAIN](#)

Blattaria – roaches



**-SMOKEYBROWN
COCKROACH**

-AMERICAN COCKROACH



BACK

Coleoptera – beetles and weevils



**-GROUND
BEETLE**



**STAG
BEETLE**



-BOLL WEEVIL

BACK

Collembola – springtails



SPRINGTAIL

BACK

Dermaptera – earwigs



EARWIGS



BACK

Diptera – flies



CRANE FLY



MOSQIUTO



- HORSE FLY

BACK

Hemiptera – true bugs



GIANT WATER BUG



WHEEL BUG



**MILKWEED
BUG**

BACK

Homoptera – cicadas, aphid



LEAFHOPPER



CICADA



- APHID

BACK

Hymenoptera– bees and wasps



BUMBLE BEE



CICADA KILLER

CARPENTER ANT –



BACK

Isoptera – termites



LARVAE



ADULT

BACK

Lepidoptera – butterflies and moths



SWALLOWTAILS



-LUNA MOTH



SULFUR-

BACK

Mantodea – mantids



PRAYING MANTIDS

BACK

Mecoptera – scorpionfly



BACK

SCORPIONFLY

Neuroptera – lacewing



DOBSON FLY



LACEWING

BACK

Orthoptera – grasshoppers



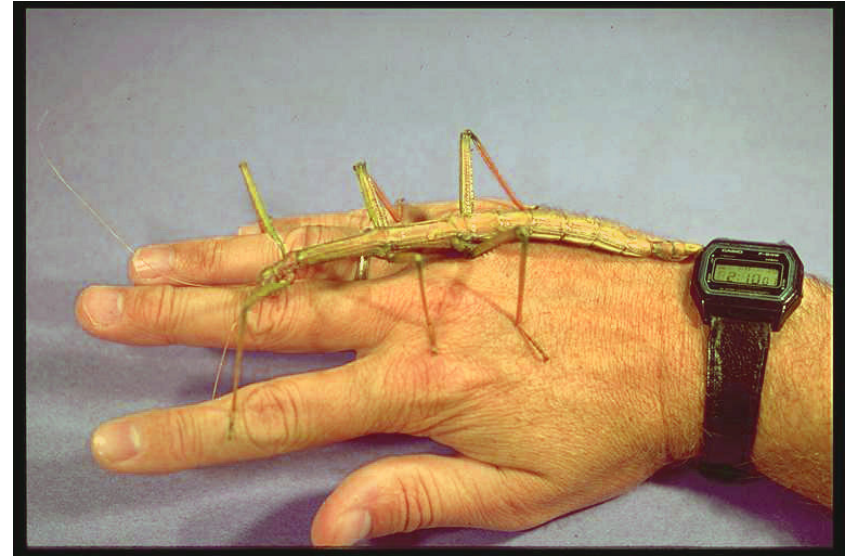
DIFFERENTIAL GRASSHOPPER



KATYDID

BACK

Phasmida – walkingstick



WALKINGSTICKS

BACK

Siphonaptera – fleas



BACK

CAT FLEA

Thysanura - silverfish



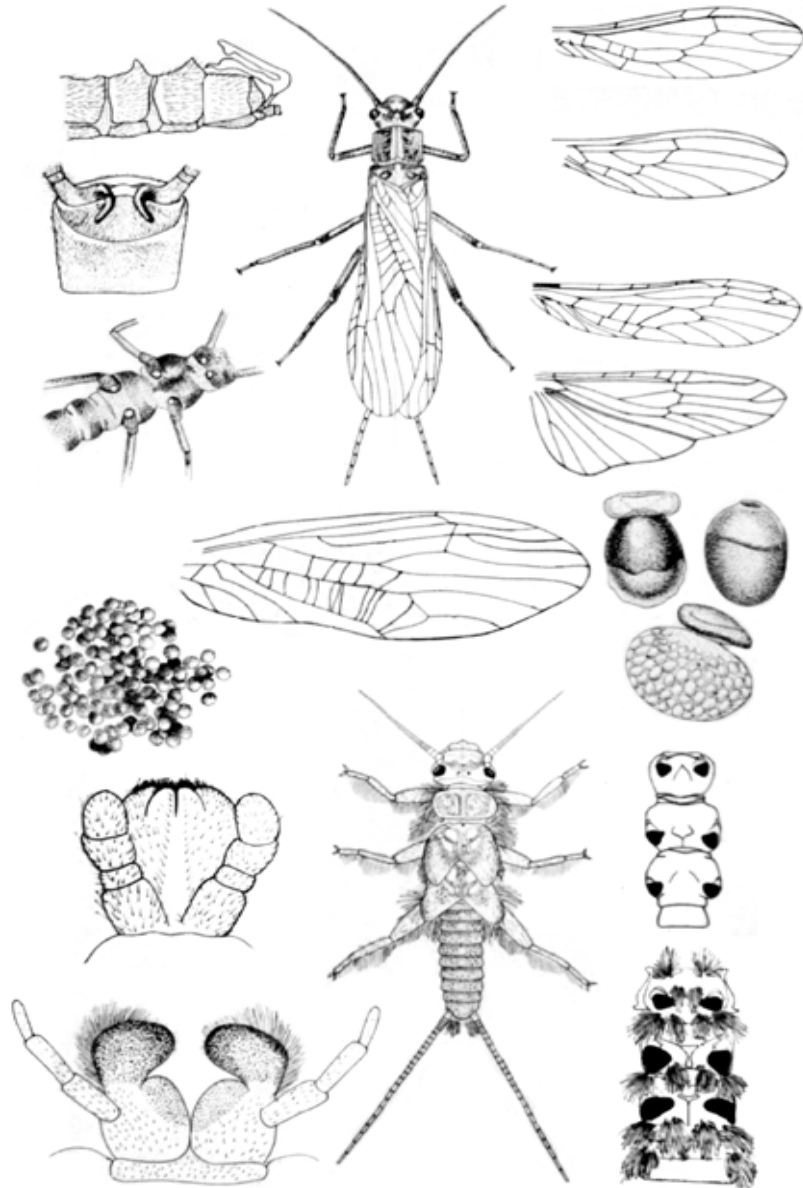
SILVERFISH



BACK

Plecoptera – stoneflies

-STONEFLIES-



BACK

Ephemeroptera – mayflies

NYMPH



ADULT



BACK

Trichoptera - caddisfly



ADULT



NYMPH

BACK

Odonata – dragonflies and damselflies

DRAGONFLY-



-DAMSELFLY

BACK